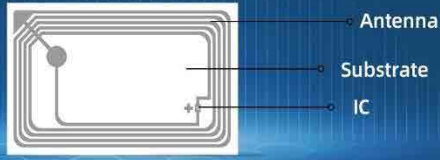


Components of an RFID tag



RFID tags can be purchased as,

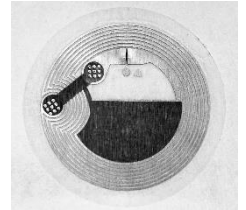
- Dry inlays
- Wet inlays
- Labels
- Cards

RFID TAGS

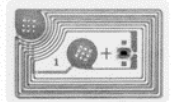
Fudan 08



AD721



Smartrac Midas

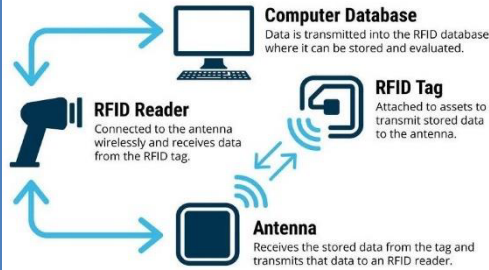


All use Mifare IC chips.
All operate at the same frequency and are held to the same ISO Standard.

Typical frequency and ISO standard (used in the entertainment industry)

Frequency: 13.56 MHz
ISO Standard: ISO-1443A

Basic RFID System



WHAT IS MIFARE ?

Mifare is a trademarked brand of NXP chips.

- Ultralight ev1 (Version of Mifare IC chip)
- NTAG 213 (Version of Mifare IC chip)

RFID manufacturers like Avery Dennison, Smartrac, Fudan, Texas Instruments and many others build RFID tags using Mifare brand IC chips.

TOP 5 Benefits RFID's of using

- Get attendees inside quickly
- Helps to eliminate fraud
- Go cashless
- Impress attendees by showing off its cool factor.
- Get to know your audience on a whole new level.

Customer questions to help us identify their needs

- Do you have an IC chip/RFID tag preference?
- If so, is this a requirement or are you open to a comparable tag type?
- Do you know the Frequency or Iso Standard of the chips you have used in the past?
- Can we send you some RFID laminates to test with your program?

Other considerations: Don't forget size matters! Make sure to check that the RFID tag size fits in the available space for parts like wristband saddles and tickets.

